

# VF30/VP30

Fingerprint / RFID Access Control



## Versatile, Convenient, Multi-functional

VF30 (fingerprint) / VP30 (RFID) are professional access control products designed for small and medium enterprises requirement of security. They integrate fingerprint identification, RFID, tamper alarm, time attendance and access control functions, with fashion and elegant appearance and reliable structure. With standalone access control software – AIM, VF30/VP30 offer group access control for high security level. The best combination of Function and Price.



# Highlight



## Easy-to-use

1. Auto wake/sleep
2. Support various verification mode: fingerprint, Password, Card
3. Illuminated blue button and simplicity semi-transparent button design are easy for day/night operation
4. Reset button
5. Function keys Fn, In, Out are convenience to manage and switch work code and time attendance status

**BioNANO**

Core Algorithm V10

Fingerprint - Facial - Iris

## Fingerprint Algorithm

1. Suitable for both wet and dry fingers
2. Automatically heals the broken lines in fingerprint images
3. Extraction of features in worn fingerprints
4. Fingerprint template auto update

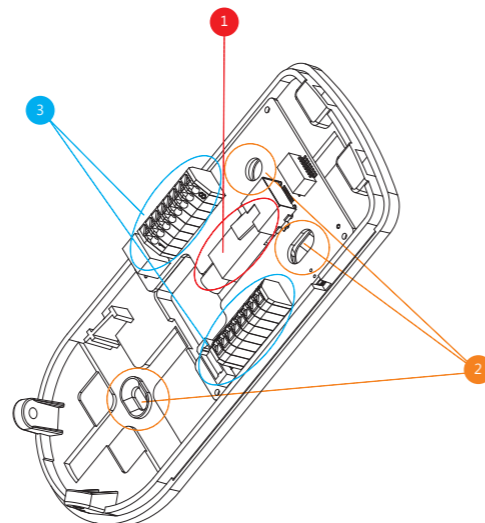
## Optical Fingerprint Sensor

1. Large image capture window for increased surface area (22x18mm)
2. Improved image quality from high quality optical imaging glass
3. Antireflective and wear resistant plate for enhanced durability
4. Fully sealed sensor for weather resistance and durability



## Easy installation

1. Standard RJ45 interface and layout redesign for quick installations
2. Adjustable mounting hole design
3. Wire connecting terminal for improved connection efficiency



# Parameters

Activation mode	Infrared Induction
Scan Area	22mm*18mm
Resolution	500 DPI
LCD	128*64 white LCD
Fingerprint Capacity	2000 (VF30)
Card Capacity	2000 (VF30) 20000 (VP30)
Log Capacity	50000 (VF30) 200000 (VP30)
Identification Mode(VF30)	FP, Card, ID+FP, ID+PW, PW+Card, FP+Card
Identification Mode(VP30)	Card, ID+PW, PW+Card
Identification Time	<0.5 Sec
Communication Interface	RS485, Mini USB Slave, TCP/IP, Wiegand Out
Card Reader Module	EM, RFID
Fingerprint Image Display	Yes
Self-defined Status	16 Customizable time and attendance status
Workcode	6- digit work code
Short Message	50
Scheduled Bell	30
Relay	DC 12V, Relay Output (COM, NO, NC)
Door Open Sensor	Yes
Tamper Alarm	Yes
Operating Voltage	DC 12V
Size	80(w)*180(h)*40(d)mm
Temperature	-10°C ~40°C
Ingress Protection Rate	IP53 (Optional Waterproof Cover)
Certificates	FCC, CE
Applicable Situation	Up to 1000 Users

## Anviz Global

Email: [sales@anziv.com](mailto:sales@anziv.com)

URL: [www.anziv.com](http://www.anziv.com)

## Distributor



**ANVIZ**® and **BioNANO**® are registered trademarks of Anviz Global and cannot be used without written permission from Anviz. Due to our consistent effort to improve our products, their appearance and specifications are subject to change without prior notice.



# Anviz Intelligent Management

AIM is a professional management platform for intelligent security. It maximizes efficiency for end users. It allows for powerful backend data processing and analysis and integrated hardware management. Combined with Anviz hardwares, AIM provides you turnkey solutions by integrating time attendance, access control, and video surveillance management into one easy to use software.

ACCESS CONTROL AND TIME ATTENDANCE MANAGEMENT	DISTRIBUTED ACCESS CONTROLLER SYSTEM	VIDEO SURVEILLANCE MANAGEMENT	SMART LOCK SYSTEM
FACILITY ON-SITE SECURITY MANAGEMENT	AMBIENT ENVIRONMENT MONITORING	ASSET MANAGEMENT	INTERNAL POS APPLICATIONS
VEHICLE PERMISSION AND TRACKING SYSTEM	ATTENDANCE VERIFICATION MANAGEMENT	FILE ARCHIVE MANAGEMENT	INFORMATION SECURITY
VISITOR SECURITY MANAGEMENT	AUTOMATIC NOTIFICATION OF UNAUTHORIZED ACTIONS		

## AIM CrossChex | Access Control and Time Attendance Management System

AIM CrossChex is an intelligent management system of access control and time attendance devices, which is applicable to all Anviz access controls and time attendances. The user-friendly and interactive design makes this system very easy to operate, the powerful function makes this system realize the management of department, staff, shift, payroll, access authority, and exports different time attendance and access control reports, satisfying different time attendance and access control requirements in different complicated environments.



Main Page



Department and Staff Management



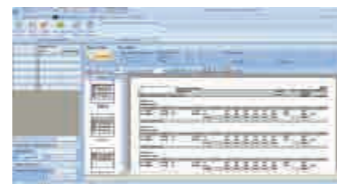
Working Shift Management



Payroll Management



Access Control Management



Multiple Reports Export

### Features:

- Access Control Management
- Employee Time Attendance Management
- Support MS Access and MS SQL Server database
- Data export to Excel and Text file for other system such as ERP, payroll etc
- All-in-one management platform for all Anviz devices

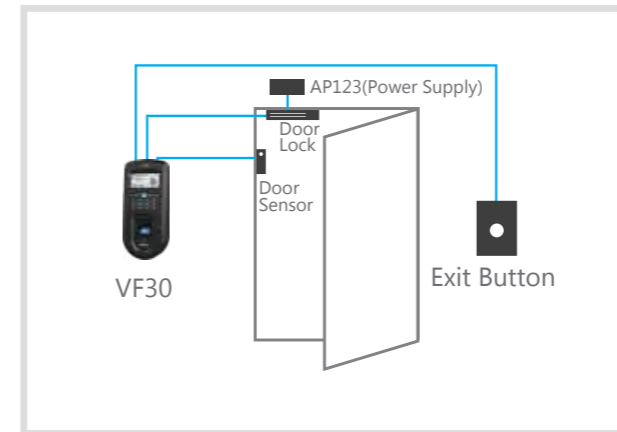
\* You are welcome to download AIM CrossChex through [www.anviz.com](http://www.anviz.com)

## Application

Flexible applications such as standalone, secure and network system for different industries.



## Network Topology Illustration



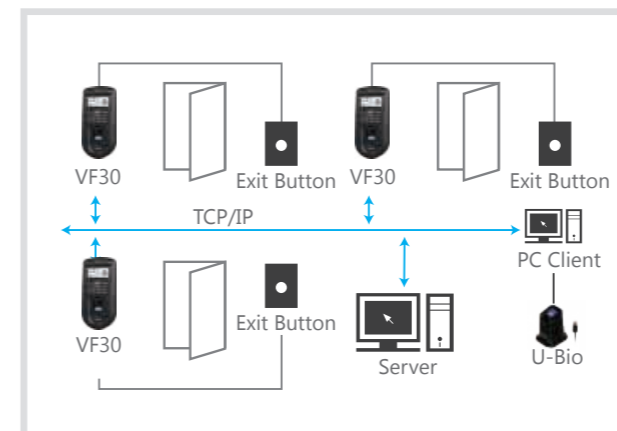
### Standalone Access Control System

The core part of this system is stand alone access control. With the lock directly controlled by the standalone access control, this system is able to supply easy and safe solution.



### Secure Access Control System

The secure system consists of an access controller and reader. Because the lock is controlled by the access controller, this system is more secure and suitable for a single door having higher safety requirement.



### Network Access Control System

The network access control system consists of different access control systems such as standalone system, secure system and distributed system. This system is the most professional solution, which best fits projects with multiple requirements.